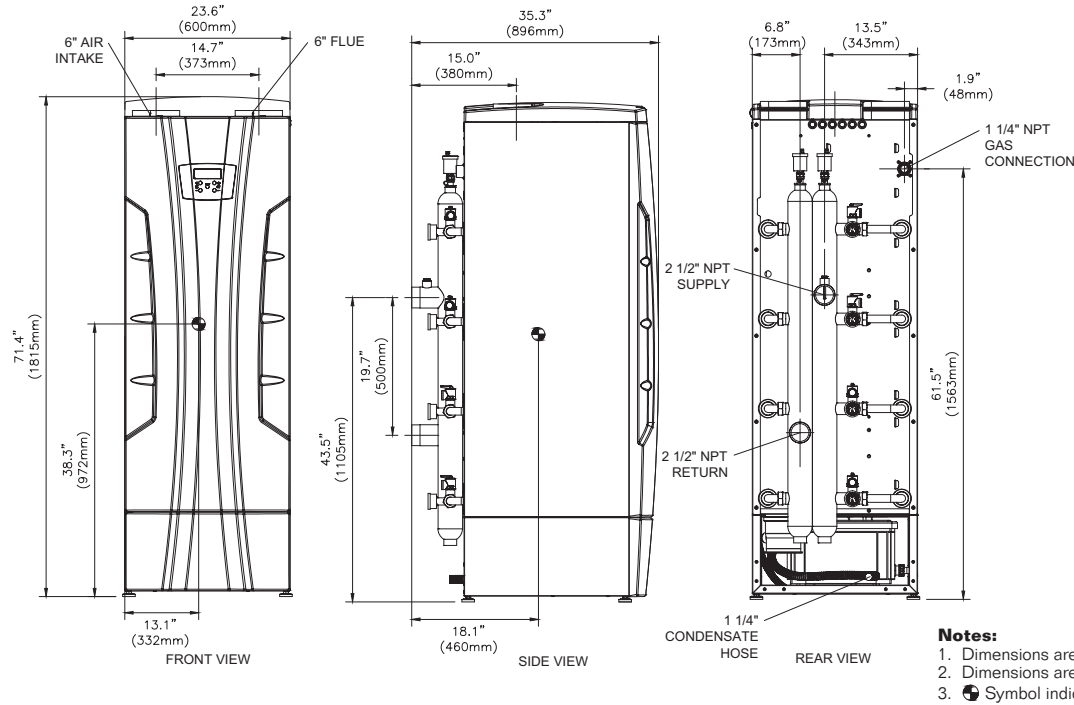


**CODE OPTIONS**

<b>CSD-1*</b>	Manual Reset LWCO
---------------	-------------------

\*Argus control is factory programmed for one ignition trial.



- Notes:**
1. Dimensions are approximate and should not be used to "rough-in" equipment.
  2. Dimensions are subject to change without notice.
  3. Ⓞ Symbol indicates center of gravity.

**BOILER CERTIFIED RATINGS & CAPACITIES**

<b>Fuel Type</b>	Natural/Propane Gas	<b>Boiler FLA</b>	4.93*
<b>Input BTU/hr.</b>	1,000,000 / 293 kW	<b>Min. Gas Pressure Required</b>	3" W.C.**
<b>Output BTU/hr.</b>	952,000 / 279 kW	<b>Max. Gas Pressure Allowed</b>	13" W.C.
<b>Electrical Requirements</b>	120VAC/ 1 ph/ 60 hz	<b>Operating Weight</b>	623 lbs. / 283 kg.

**BOILER TEMPERATURE RISE / PRESSURE DROP**

25°F / 13.9°C				30°F / 16.7°C				35°F / 19.4°C			
Flow Rate		Pressure Drop		Flow Rate		Pressure Drop		Flow Rate		Pressure Drop	
GPM	L/s	Ft	kPa	GPM	L/s	Ft	kPa	GPM	L/s	Ft	kPa
76.2	4.8	42.0	125.5	63.5	4.0	28.5	85.2	54.4	3.4	21.0	62.8

**BOILER / WATER HEATER TRIM & CONTROLS**

<b>Main Gas Valve</b>	Sit 848 Sigma	<b>Air Switch</b>	HUBA
<b>Ignition Control</b>	Argus	<b>Blower Motor</b>	EBM
<b>Operating Control</b>	Argus	<b>Relief Valve - IW</b>	3/4" x 3/4" @ 125 psi
<b>High Limit</b>	J2D-AOVJ	<b>Relief Valve - IB</b>	3/4" x 3/4" @ 50 psi

**WATER HEATER HOURLY RECOVERY CAPACITY (GPH & LPH)**

40°F	22°C	60°F	33°C	80°F	44°C	100°F	56°C	120°F	67°C	140°F	78°C
2806	10607	1871	7071	1403	5304	1122	4243	935	3536	802	3031

**A.S.M.E.**

<b>ASME Sect IV Htg Surface</b>	18.00 Sq. Ft. / 1.68 Sq. M.	<b>Design Data</b>	Max. 160 psig & 210°F
<b>Water Volume</b>	9.0 gal / 34.07 Liters		

\* Add circulator amps.  
 \*\* For incoming gas pressures lower than 3" W.C. natural or propane, consult factory.

<b>REP FIRM</b>	_____	<b>INFINITE ENERGY 2-1000</b> Category II or IV Appliance (see Installation and Operation Manual for venting information)
<b>SUBMITTED BY</b>	_____	
<b>JOB NAME</b>	_____	
<b>ARCHITECT</b>	_____	
<b>ENGINEER</b>	_____	
<b>CONTRACTOR</b>	_____	
<b>DATE</b>	_____	<b>RBI</b> ® A Division of Mestek, Inc. Westfield, MA 01085 (413) 564-5515 <small>RELIABLE. BOLD. INNOVATIVE.</small>